

systemtronic

Wing Wardrobe



Open wardrobe that simultaneously makes it possible to organise clothes, shoes, bags and other accessories thanks to the way it unites the hanging rod with shelves. Designed for individual use or combined with other elements of the same unit, as well as forming compositions with the Wing shelves. Available in two sizes, 1600 and 800 mm; and two versions, wall-mounted and freestanding.

Year of launch: 2022.



DESIGN
AWARD
2022



Mario Ruiz

A graduate of Industrial Design from Barcelona's Elisava University School of Design and Engineering, Mario Ruiz stands out for his discretion, allowing products to speak for themselves through their clean and coherent lines. His designs speak volumes in their simplicity; they live with their users without being conspicuous. His extensive career experience is remarkable for its multidisciplinary and international projection, with projects that span furniture, lighting and technology design, architecture and creative direction.

COMPONENTS AND MATERIALS

1. Shelves

The body of the shelves is an extruded aluminum profile, manufactured from its matrix, specifically designed for this shelving unit. The depth of the shelf is 325 mm. It has rounded corners. The total thickness in the center is 15 mm, reducing on both sides symmetrically and gradually, until showing off its edges of barely 2,5 mm in thickness, which highlights its lightness.

Standard shelf length measurements: 800 and 1600 mm.

2. Upstands

Manufactured in extruded aluminum from its matrix, which defines the thickness of 17 mm and the depth of 134 mm.

The standard height of these upstands is 340 mm. Thereby enabling the convenient storage of folders.

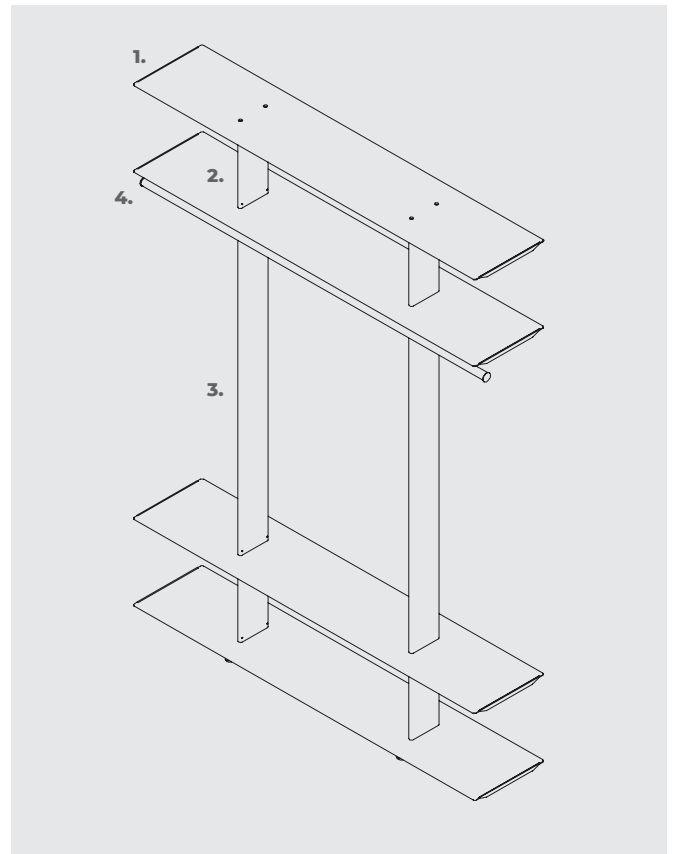
3. Wing wardrobe uprights

Made of extruded aluminum from its matrix, which defines the thickness of 17 mm and the depth of 134 mm.

The standard height of these uprights is 1405 mm.

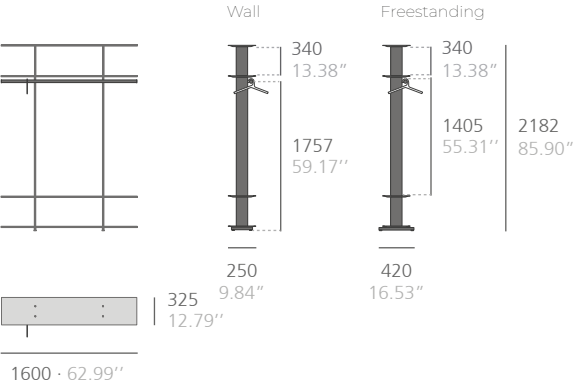
4. Hanging rod

30 mm diameter chromed or satin black nickel bar.



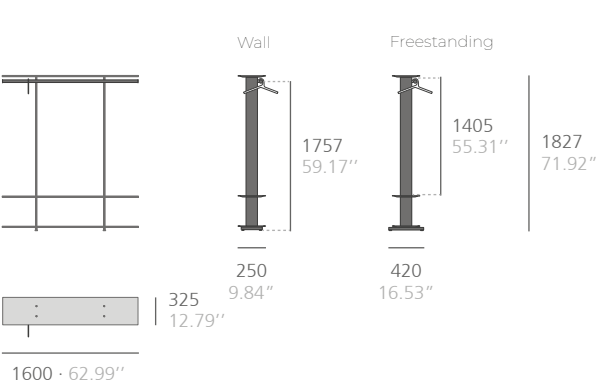
WING 1600 WALL AND FREESTANDING

1600 Wardrobe

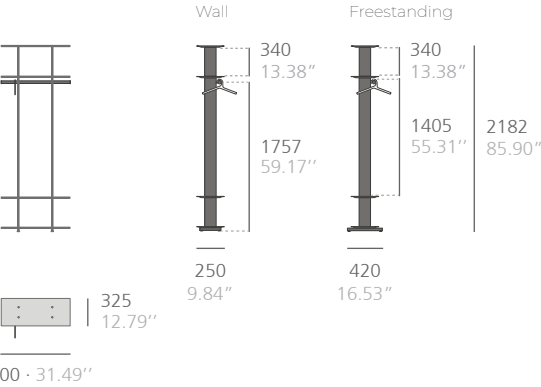


Hangers not included.

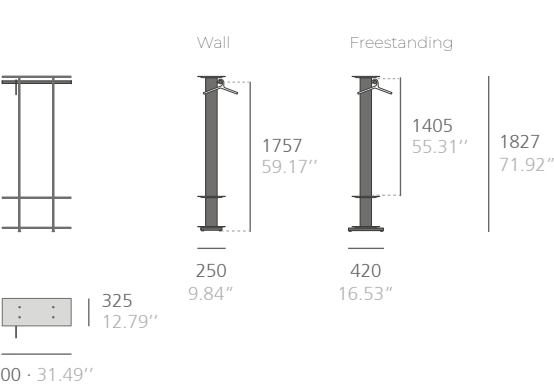
1600 Basic Wardrobe



800 Wardrobe

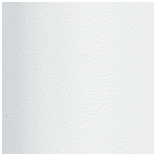


800 Basic Wardrobe



FINISHES (for especial finishes and dimensions, consult)

Group 1



Textured white
RAL 9003



Textured black
RAL 9011

Paint

High coverage thermoset polyester powder coating.

Group 2



Textured silk grey
RAL 7044



Textured silver
grey RAL 7001



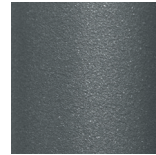
Textured reseda
green RAL 6011



Textured beige
red RAL 3012

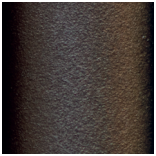


Textured tomato
red RAL 3013

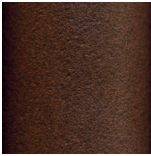


Forge grey

Group 3

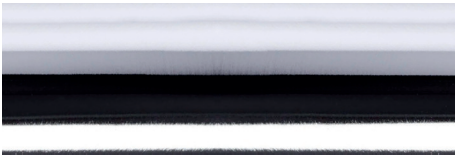


Textured
bronze bagana

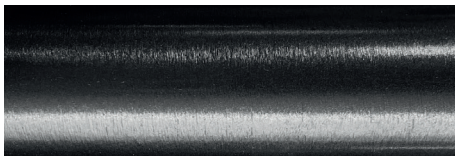


Textured
rust rame

HANGING ROD FINISHES



Chrome-plated



Black nickel-plated

MAINTENANCE

-Polyester paint:

For dry dirt (dust), a damp cloth is recommended.

For greasy/oily dirt (fingerprints), wiping with a wet sponge and washing-up liquid (Vim liquid) and then a damp cloth is advised.

The use of detergents containing solvents and/or pure ethyl alcohol should be avoided.

-Wood:

Using a cloth or products sold specifically for cleaning natural wood is advised.

Products containing solvents and/or alcohol should be avoided.

-Aluminum-metal-glass-melamine-plastic material:

Using a cloth or products sold specifically for cleaning natural wood is advised.

Products containing solvents and/or alcohol should be avoided.

SUSTAINABILITY

The flexible and extremely adaptable design of the products in the Wing collection allows them to be reused, resulting in a longer lifespan. They are made with 100 % recyclable materials. At least 25 % of the aluminum used is recycled. The paints do not contain solvents, do not consume water and do not generate emissions or waste. The result is a lower environmental impact.