

# systemtronic

## Wing Desk



Desk 1600 mm long, with shelves that can be used to store books, office materials, decorative items, etc. With this piece of furniture, the collection reinforces its possible use as a key piece for remote working from home. Designed for individual use or to form compositions with the Wing shelves. The board can be requested in a natural oak finish, or in a white, black or industrialized laminate oak finish. Available in two versions: wall-mounted or freestanding.

Year of launch: 2022.



### Mario Ruiz

A graduate of Industrial Design from Barcelona's Elisava University School of Design and Engineering, Mario Ruiz stands out for his discretion, allowing products to speak for themselves through their clean and coherent lines. His designs speak volumes in their simplicity; they live with their users without being conspicuous. His extensive career experience is remarkable for its multidisciplinary and international projection, with projects that span furniture, lighting and technology design, architecture and creative direction.

## COMPONENTS AND MATERIALS

### 1. Shelves

The body of the shelves is an extruded aluminum profile, manufactured from its matrix, specifically designed for this shelving unit. The depth of the shelf is 325 mm. It has rounded corners. The total thickness in the center is 15 mm, reducing on both sides symmetrically and gradually, until showing off its edges of barely 2,5 mm in thickness, which highlights its lightness.

Standard shelf length measurement: 1600 mm.

### 2. Upstands

Manufactured in extruded aluminum from its matrix, which defines the thickness of 17 mm and the depth of 134 mm.

The standard height of these upstands is 340 mm. Thereby enabling the convenient storage of folders.

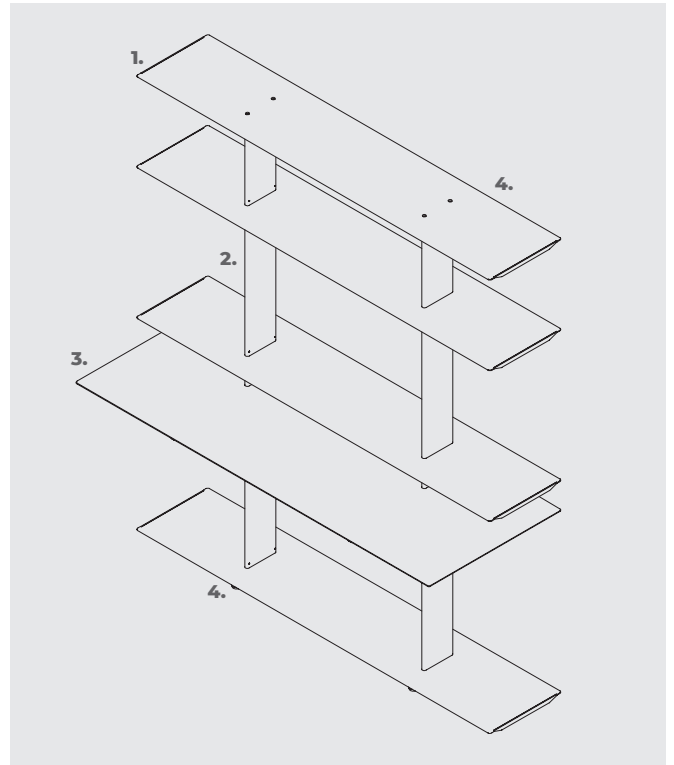
### 3. Board

1600x600 mm top MDF body with matt polished natural oak finish or white or black industrialized laminate. Beveled edges.

### 4. Anchors

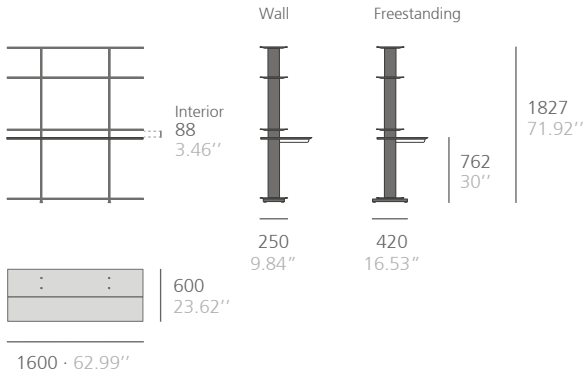
Both in its wall-mounted and freestanding versions, it must be anchored to the wall or to the ground, respectively.

The hooks, which are made of steel, are included and are designed to adapt to possible unevenness of the surface on which it is to be anchored.



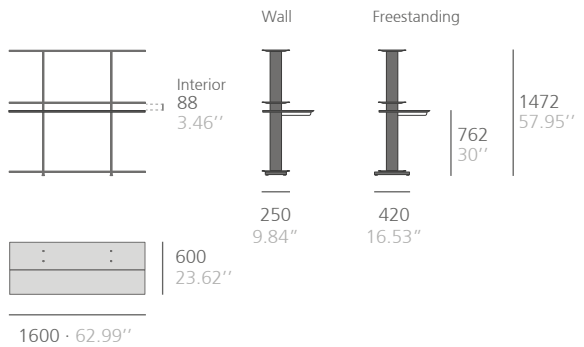
## WING DESK

### 1600 Desk



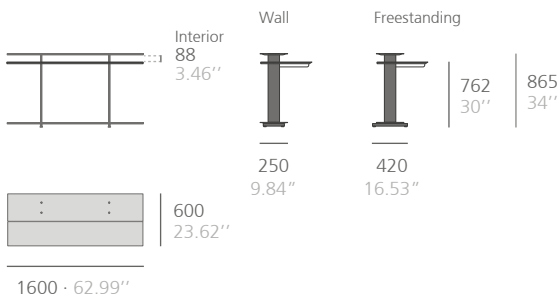
This module must be fixed to the floor or to the wall. Anchors included.

### 1600 Basic Desk



This module must be fixed to the floor or to the wall. Anchors included.

### 1600 Mini Desk



This module must be fixed to the floor or to the wall. Anchors included.

**FINISHES** (for especial finishes and dimensions, consult)

---

**Group 1**



Textured white  
RAL 9003



Textured black  
RAL 9011

**Paint**

High coverage thermoset polyester powder coating.

**Group 2**



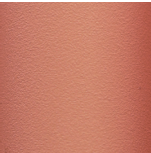
Textured silk grey  
RAL 7044



Textured silver  
grey RAL 7001



Textured reseda  
green RAL 6011



Textured beige  
red RAL 3012



Textured tomato  
red RAL 3013



Forge grey

**Group 3**



Textured  
bronze bagana



Textured  
rust rame

**BOARD FINISHES**

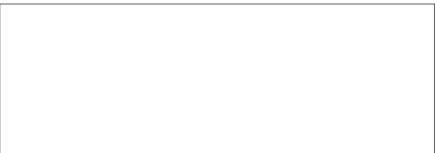
---

**Natural oak veneer**

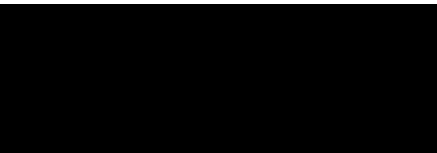
Matt polished natural oak veneer.



**Industrialized laminate**



Soft white



Soft black

## MAINTENANCE

---

### -Polyester paint:

For dry dirt (dust), a damp cloth is recommended.

For greasy/oily dirt (fingerprints), wiping with a wet sponge and washing-up liquid (Vim liquid) and then a damp cloth is advised.

The use of detergents containing solvents and/or pure ethyl alcohol should be avoided.

### -Wood:

Using a cloth or products sold specifically for cleaning natural wood is advised.

Products containing solvents and/or alcohol should be avoided.

### -Aluminum-metal-glass-melamine-plastic material:

Using a cloth or products sold specifically for cleaning natural wood is advised.

Products containing solvents and/or alcohol should be avoided.

## SUSTAINABILITY

---

The flexible and extremely adaptable design of the products in the Wing collection allows them to be reused, resulting in a longer lifespan. They are made with 100 % recyclable materials. At least 25 % of the aluminum used is recycled. The paints do not contain solvents, do not consume water and do not generate emissions or waste. The result is a lower environmental impact.