

systemtronic

Wing Bench



1600 mm long bench with upholstery available in three 100% recycled finishes. Ideal to be placed at the foot of a bed. This piece of furniture is a practical two-in-one: being upholstered, it becomes a comfortable seat and, thanks to its lower shelf, it offers extra space to store plaids, shoes, cushions, books or other objects.

Year of launch: 2022.



DESIGN
AWARD
2022



Mario Ruiz

A graduate of Industrial Design from Barcelona's Elisava University School of Design and Engineering, Mario Ruiz stands out for his discretion, allowing products to speak for themselves through their clean and coherent lines. His designs speak volumes in their simplicity; they live with their users without being conspicuous. His extensive career experience is remarkable for its multidisciplinary and international projection, with projects that span furniture, lighting and technology design, architecture and creative direction.

Components and materials

1. Shelves

The body of the shelves is an extruded aluminum profile, manufactured from its matrix, specifically designed for this shelving unit. The depth of the shelf is 325 mm. It has rounded corners. The total thickness in the center is 15 mm, reducing on both sides symmetrically and gradually, until showing off its edges of barely 2,5 mm in thickness, which highlights its lightness.

Standard shelf length measurement: 1600 mm.

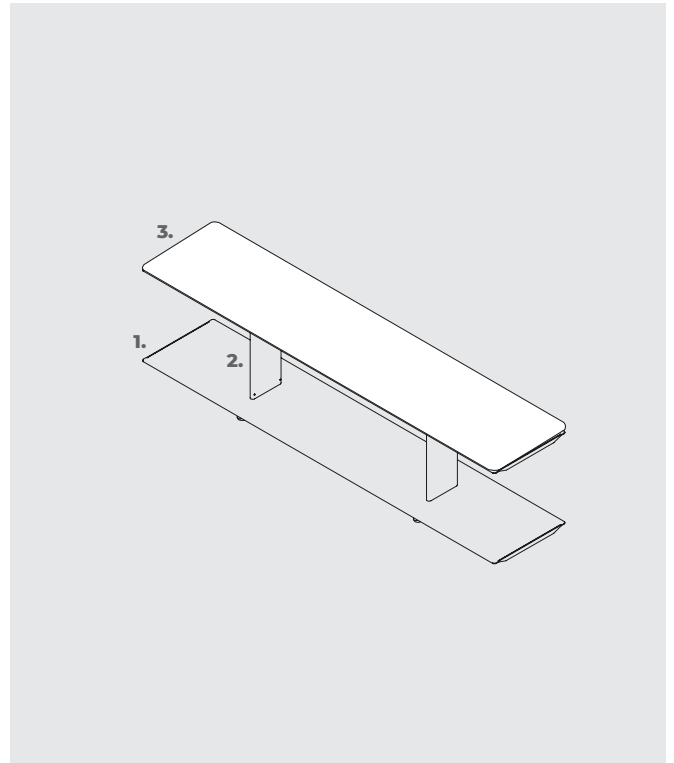
2. Upstands

Manufactured in extruded aluminum from its matrix, which defines the thickness of 17 mm and the depth of 134 mm.

The standard height of these upstands is 340 mm. Thereby enabling the convenient storage of folders.

3. Upholstered

Upholstered with fabric made of 100% recycled polyester that, in its manufacture, does not use new raw materials and does not generate waste.



WING BENCH

Bench



437
17.2"

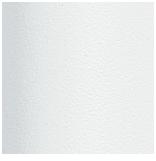


325
12.79"

1600 · 62.99"

FINISHES (for especial finishes and dimensions, consult)

Group 1



Textured white
RAL 9003



Textured black
RAL 9011

Paint

High coverage thermoset polyester powder coating.

Group 2



Textured silk grey
RAL 7044



Textured silver
grey RAL 7001



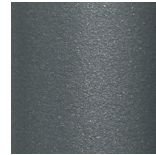
Textured reseda
green RAL 6011



Textured beige
red RAL 3012

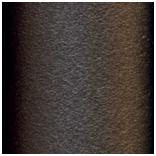


Textured tomato
red RAL 3013



Forge grey

Group 3



Textured
bronze bagana



Textured
rust rame

UPHOLSTERED FINISHES



Light grey N51



Beige N07



Anthracite N53



100 % recycled polyester fabric:

- GRS recycled from PET bottles 81%
- GRS recycled PET waste 19%



Fabric flammability:

- BS5852 Source 0
- EN1021-Part 1
- CAL TB 117
- NFPA 260

OEKO-TEX®
CONFIDENCE IN TEXTILES
STANDARD 100
202000217-AT/EX

Oekotex certificate

MAINTENANCE

-Polyester paint:

For dry dirt (dust), a damp cloth is recommended.

For greasy/oily dirt (fingerprints), wiping with a wet sponge and washing-up liquid (Vim liquid) and then a damp cloth is advised.

The use of detergents containing solvents and/or pure ethyl alcohol should be avoided.

-Wood:

Using a cloth or products sold specifically for cleaning natural wood is advised.

Products containing solvents and/or alcohol should be avoided.

-Aluminum-metal-glass-melamine-plastic material:

Using a cloth or products sold specifically for cleaning natural wood is advised.

Products containing solvents and/or alcohol should be avoided.

SUSTAINABILITY

The flexible and extremely adaptable design of the products in the Wing collection allows them to be reused, resulting in a longer lifespan. They are made with 100 % recyclable materials. At least 25 % of the aluminum used is recycled. The paints do not contain solvents, do not consume water and do not generate emissions or waste. The incorporated fabrics are made entirely of recycled material and its manufacturing process does not generate any rubbish. The result is a lower environmental impact.