

**systemtronic**  
datasheet S15



General description:

The S15 is a basic element in workspaces. It consists of a non-slip polymer platform measuring 450x350 mm, supported by a metal structure made of 1.5 mm thick cold-rolled square tubing.

The tilt is adjustable in two positions: 12° and 17°.

It holds a test certificate issued by AIDIMME confirming compliance with DIN 4556-83 standard: "Office furniture. Footrests for workstations. Requirements and dimensions."

Being ergonomically correct does not conflict with aesthetics; therefore, the S15 features a design that adapts to any environment.

Designers: STC Studio.



**systemtronic** \_ S15  
www.st-systemtronic.com  
comercial@st-systemtronic.com  
tel. +34 961 852 784

ASSOCIATED N°00320

**AIDIMME**®  
INSTITUTO TECNOLÓGICO

METALMECÁNICO, MUEBLE, MADERA, EMBALAJE Y AFINES

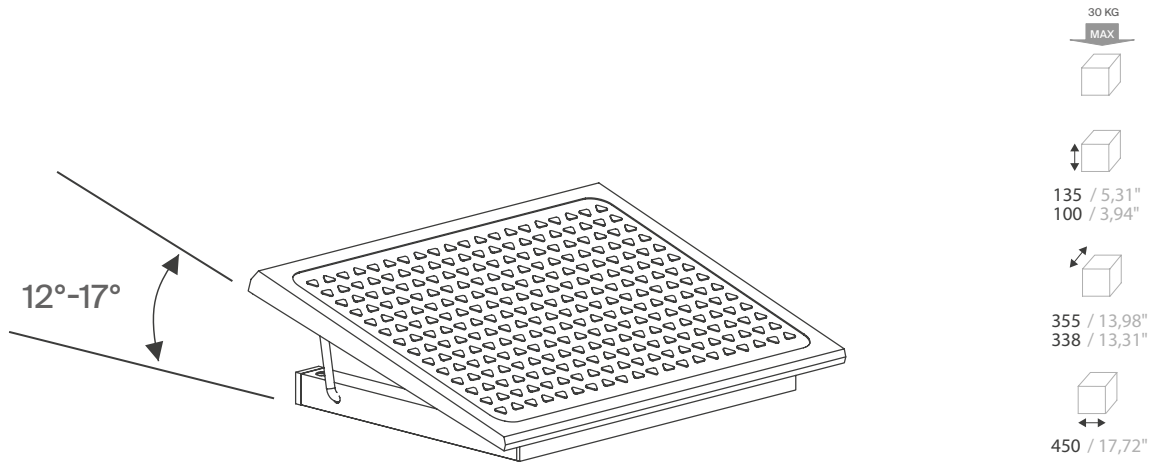


Calidad Controlada

**Technical description:**




Material: polymeric plate and metal structure, composed of cold-rolled square tube, 1,5 mm thick.

Dimensions: 450x355x135 mm 17.71x13.97x5.31"

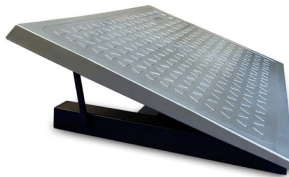


mm · inches

**Finishes:**

Structure	Plate	
		
satin black RAL 9011	aluminum	black
*Polyester paint		

Version with aluminum plate



Consult for special dimensions or any other modification.

**Maintenance:**

**-Polyester Paint:**

For dry dirt (dust), use a damp cloth. For greasy/oily stains (fingerprints), wipe with a sponge with water and dishwashing liquid. Rinse with a damp cloth. Avoid using products containing solvents and/or pure ethyl alcohol.

**-Aluminium-metal-glass-melamine-plastic:**

We recommend using normal cleaning products for delicate surfaces. Alcohol, solvents and abrasive agents must be avoided.

**Sustainability:**

The used paints do not contain solvents, do not consume water and do not generate emissions or waste. The result is a lower environmental impact.