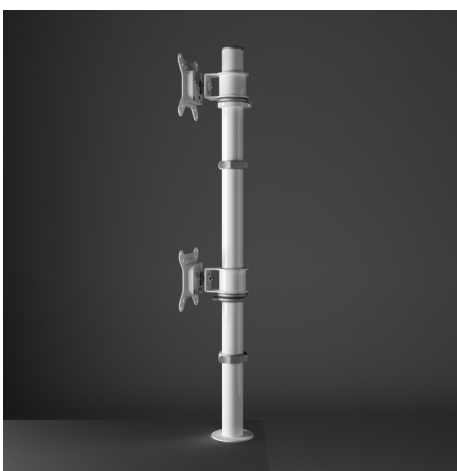
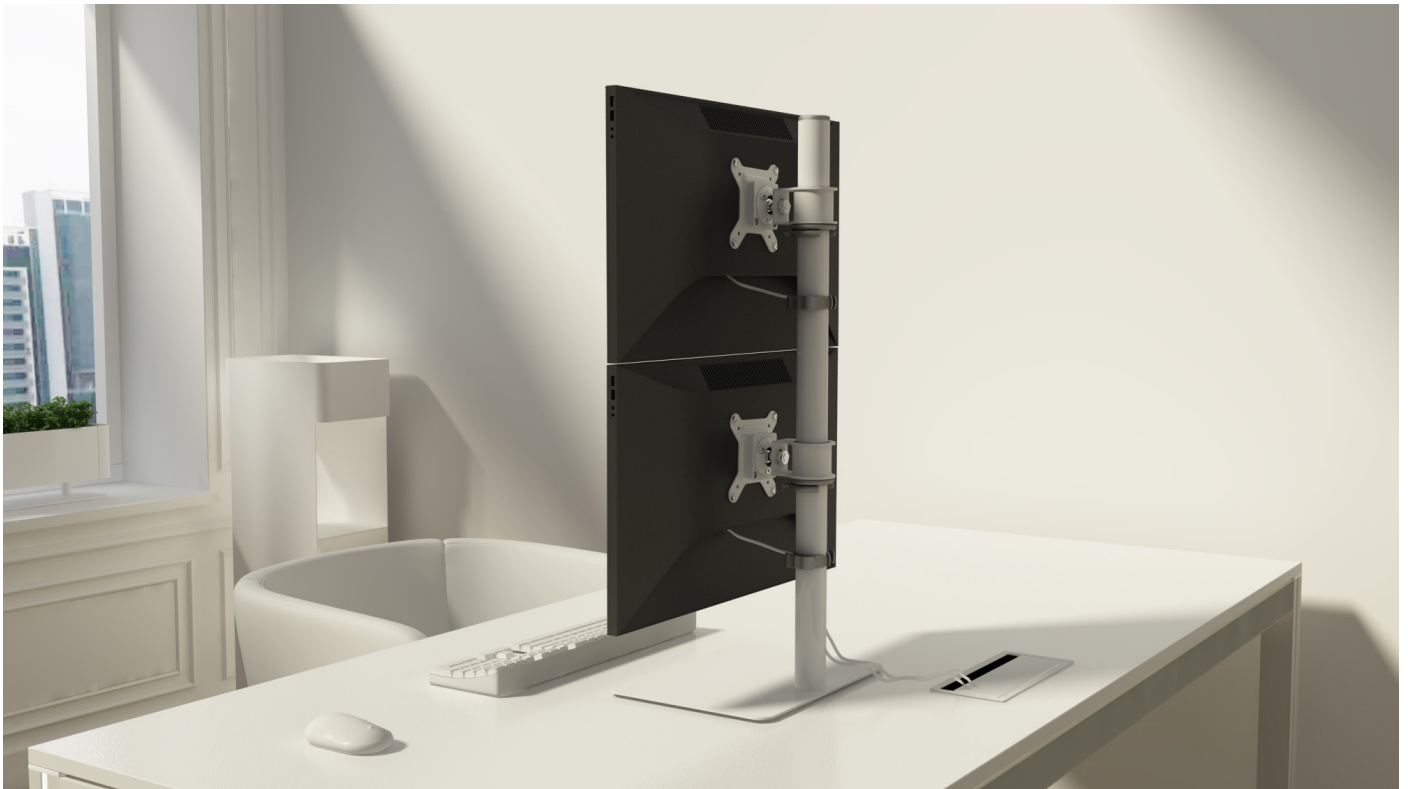
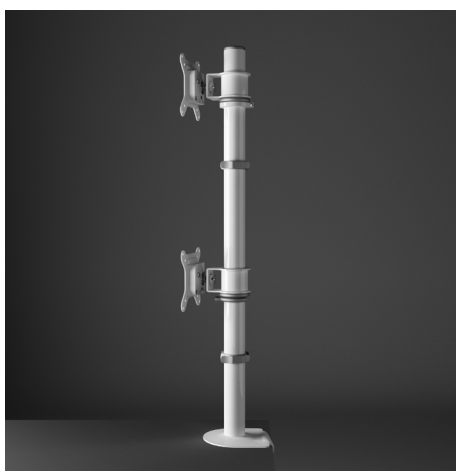


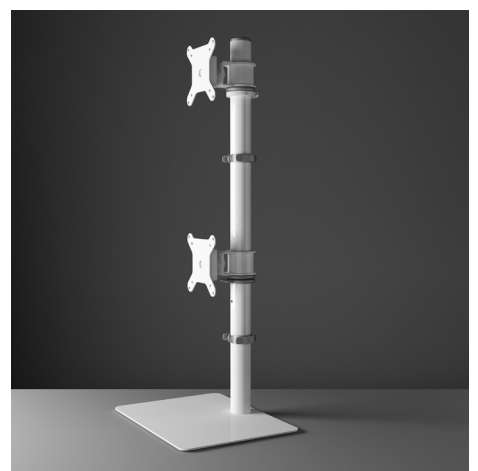
systemtronic  
datasheet CM10 double



CM10D/2  
Fixing to the table with discs.

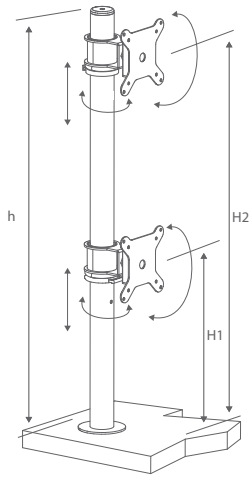


CM10M/2  
Fixing to the table with clamp.

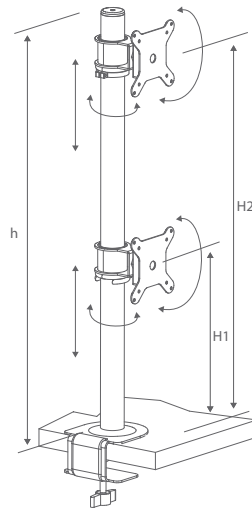


CM10B/2  
Fixing to the table with base.

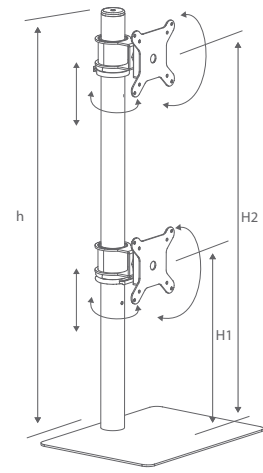
CM10D/2



CM10M/2



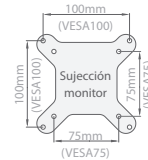
CM10B/2



surface · superficie (mm)	height · altura (mm)	maximum load · carga max. (kg)
maximum two 23" screens · máximo 2 monitores de 23"	H1: min 258 - max 338 H2: max 698 h: 729	20 total
Standard tabletop thickness: min 19 mm - max 52 mm		

surface · superficie (mm)	height · altura (mm)	maximum load · carga max. (kg)
maximum two 23" screens · máximo 2 monitores de 23"	H1: min 263 - max 343 H2: max 703 h: 734	20 total
Standard tabletop thickness: min 19 mm - max 52 mm		

surface · superficie (mm)	height · altura (mm)	maximum load · carga max. (kg)
maximum two 23" screens · máximo 2 monitores de 23"	H1: min 261 - max 341 H2: max 701 h: 732	20 total



\* Adapters that comply with the VESA75 and VESA100 standards are included.  
\*\* Wall fastening hardware included.

#### Technical description:

Dual CM10 is a desktop stand for vertically positioning two computer monitors. Complies with VESA75 and VESA100 standards.

There are three models available:

- CM10D / 2: with two screwed steel discs (this system needs to drill holes in the table top)
- CM10M / 2: with clamp (without drilling the board)
- CM10B / 2: with base (without drilling the board)

The column with a diameter of 40mm is made of cold-rolled steel, the height of which is regulated along it.

The column also includes a cable gland clamp.

The set includes a ball joint by means of which we manage to orient the monitor to taste and a mounting piece for the star monitor that complies with the VESA75 and VESA100 standards.

Parts coating, fire retardant polyester paint.

#### Finishes:

aluminum gloss RAL 9006	gray gloss RAL 7035	satin black RAL 9011	white gloss
*Polyester paint			

Consult for special dimensions or any other modification.

#### Maintenance:

-Polyester Paint:

For dry dirt (dust), use a damp cloth. For greasy/oily stains (fingerprints), wipe with a sponge with water and dishwashing liquid.

Rinse with a damp cloth. Avoid using products containing solvents and/or pure ethyl alcohol.

-Aluminium-metal-glass-melamine-plastic:

We recommend using normal cleaning products for delicate surfaces. Alcohol, solvents and abrasive agents must be avoided.

#### Sustainability:

Manufacturing materials are 100 % recyclable. The used paints do not contain solvents, do not consume water and do not generate emissions or waste. The result is a lower environmental impact.

systemtronic \_ CM10 doble

www.st-systemtronic.com

nacional@st-systemtronic.com · export@st-systemtronic.com

tel. 96-1852784 · fax. 34-961854482

Creation date: 11.08.2021 / Last revision: 15.09.2021

ASSOCIATED N°00320

AIIDIMME  
INSTITUTO TECNOLÓGICO

MECÁNICO, MUEBLE, MADERA, EMBALAJE Y AFINES



Calidad Controlada