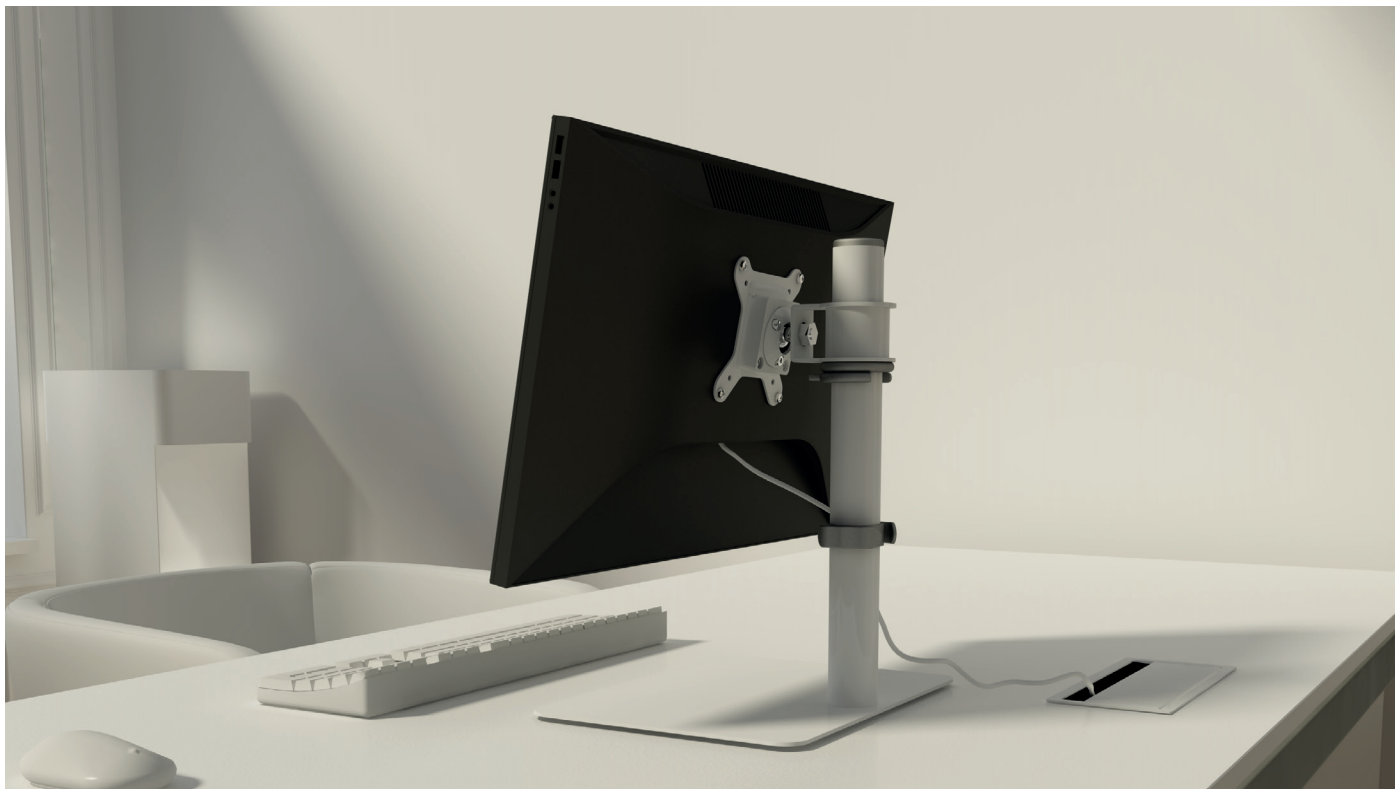


systemtronic datasheet CM10



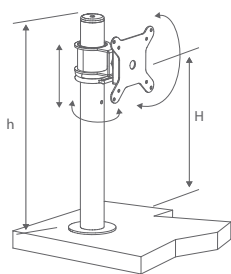
CM10D.
Fixing to the table with discs.



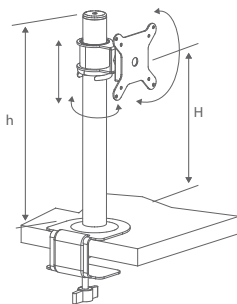
CM10M.
Fixing to the table with clamp.



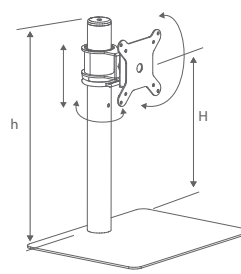
CM10B.
Fixing to the table with base.



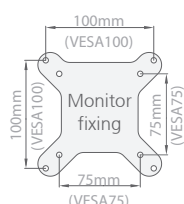
surface (mm)	height (mm)	maximum load (kg)
maximum 1 monitor of 27"	H: min 258 - max 338 h: 369	20 total
Standard board thickness: min 19 mm - max 52 mm		



surface (mm)	height (mm)	maximum load (kg)
maximum 1 monitor of 27"	H: min 263 - max 343 h: 374	20 total
Standard board thickness: min 19 mm - max 52 mm		



surface (mm)	height (mm)	maximum load (kg)
maximum 1 monitor of 23"	H: min 261 - max 341 h: 372	20 total



- * Adapters that comply with the VESA75 and VESA100 standards are included.
- ** Wall fastening hardware included.

Technical description:

CM10 is a desktop support for computer monitors that comply with the VESA75 and VESA100 standards.

Three models available:

- CM10D: with two bolted steel discs (this system requires drilling the tabletop)
- CM10M: with clamp (without drilling the board)
- CM10B: with base (without drilling the board)

The 40 mm diameter column is made of cold rolled steel, along which the height is regulated. The column also includes a cable clamp.

The set includes a ball joint, by means of which we manage to guide the monitor to as wished, and a piece of support to the star monitor, which complies with the VESA75 and VESA100 standards.

Coating parts, fire-retardant polyester paint.

Finishes:

aluminum gloss RAL 9006	gray gloss RAL 7035	satin black RAL 9011	white gloss
*Polyester paint			

Consult for special dimensions or any other modification.

Maintenance:

-Polyester Paint:

For dry dirt (dust), use a damp cloth. For greasy/oily stains (fingerprints), wipe with a sponge with water and dishwashing liquid. Rinse with a damp cloth. Avoid using products containing solvents and/or pure ethyl alcohol.

-Aluminium-metal-glass-melamine-plastic:

We recommend using normal cleaning products for delicate surfaces. Alcohol, solvents and abrasive agents must be avoided.

Sustainability:

Manufacturing materials are 100% recyclable. The used paints do not contain solvents, do not consume water and do not generate emissions or waste. The result is a lower environmental impact.

systemtronic _ CM10

www.st-systemtronic.com

nacional@st-systemtronic.com · export@st-systemtronic.com

tel. 96-1852784 · fax.34-961854482

ASSOCIATED N°00320

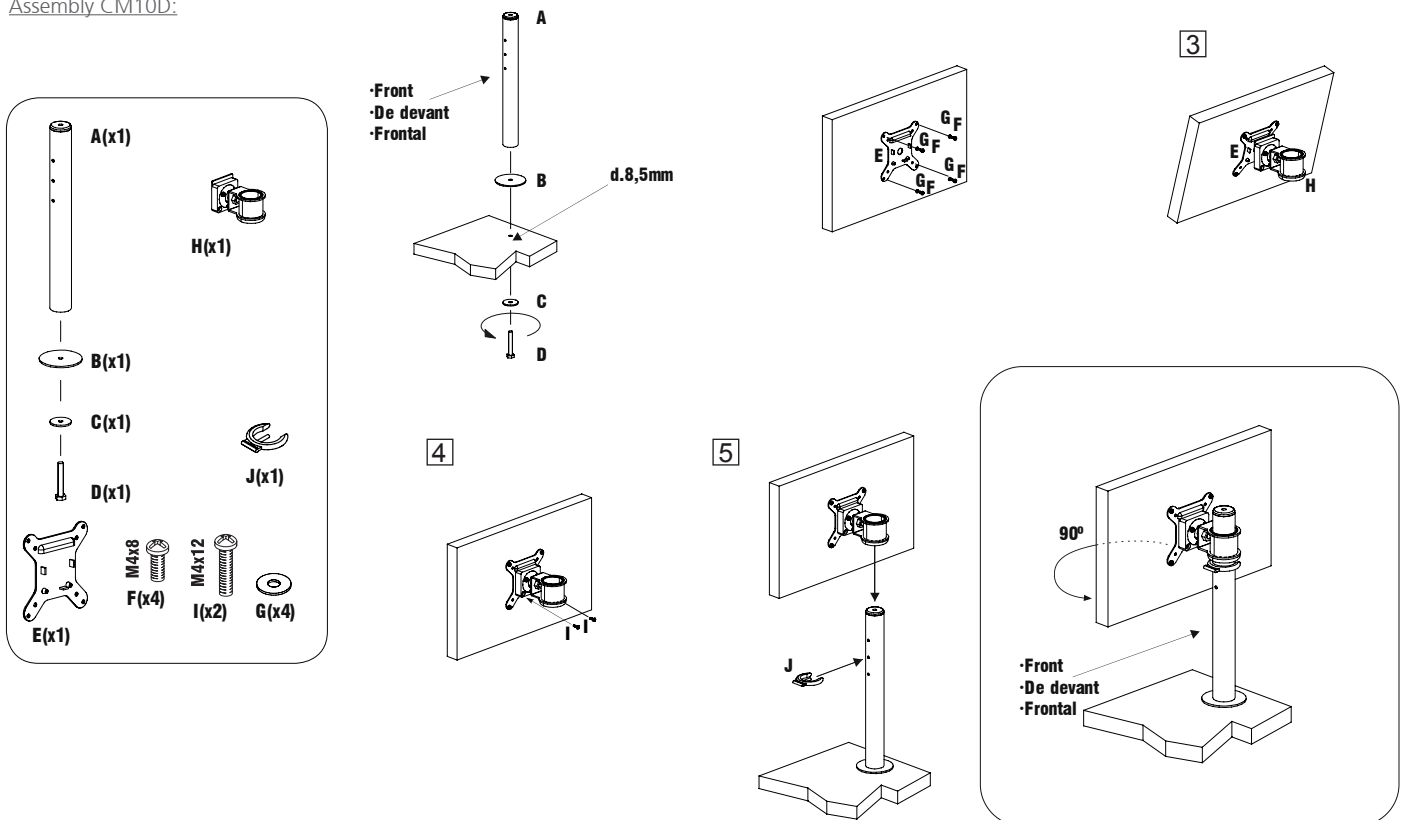
AIDIMME
INSTITUTO TECNOLÓGICO

METALMECÁNICO, MUEBLE, MADERA, EMBALAJE Y AFINES



Calidad Controlada

Assembly CM10D:



Assembly CM10B:

