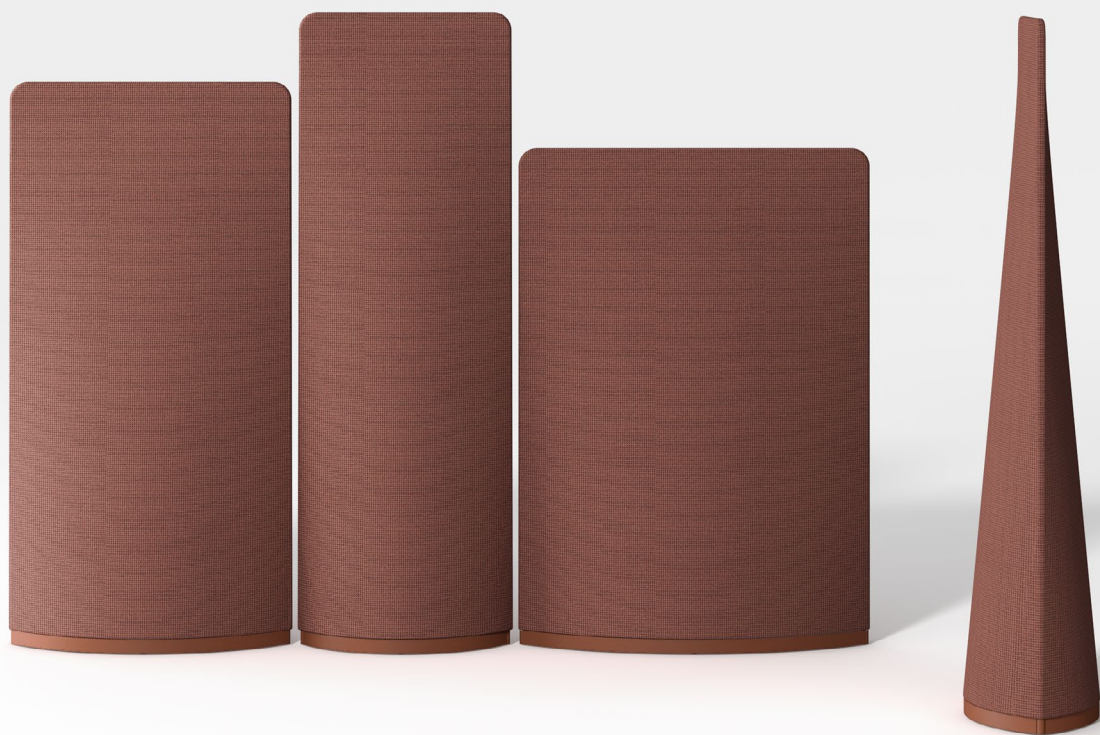


systemtronic

datasheet SAIL



General description:

Collection of freestanding partitions with acoustic properties, inspired by navigation and the Mediterranean. It is composed of three models that can be combined with each other.

Designer: Aitor García de Vicuña.

Year of launch: 2026.



systemtronic _ Sail
www.st-systemtronic.com
comercial@st-systemtronic.com
tel. +34 961 852 784

ASSOCIATED N°00320

AIDIMME
INSTITUTO TECNOLÓGICO

METALMECÁNICO, MUEBLE, MADERA, EMBALAJE Y AFINES



Calidad Controlada

Technical description:

Materials:

Structure: Steel.

Base: Steel.

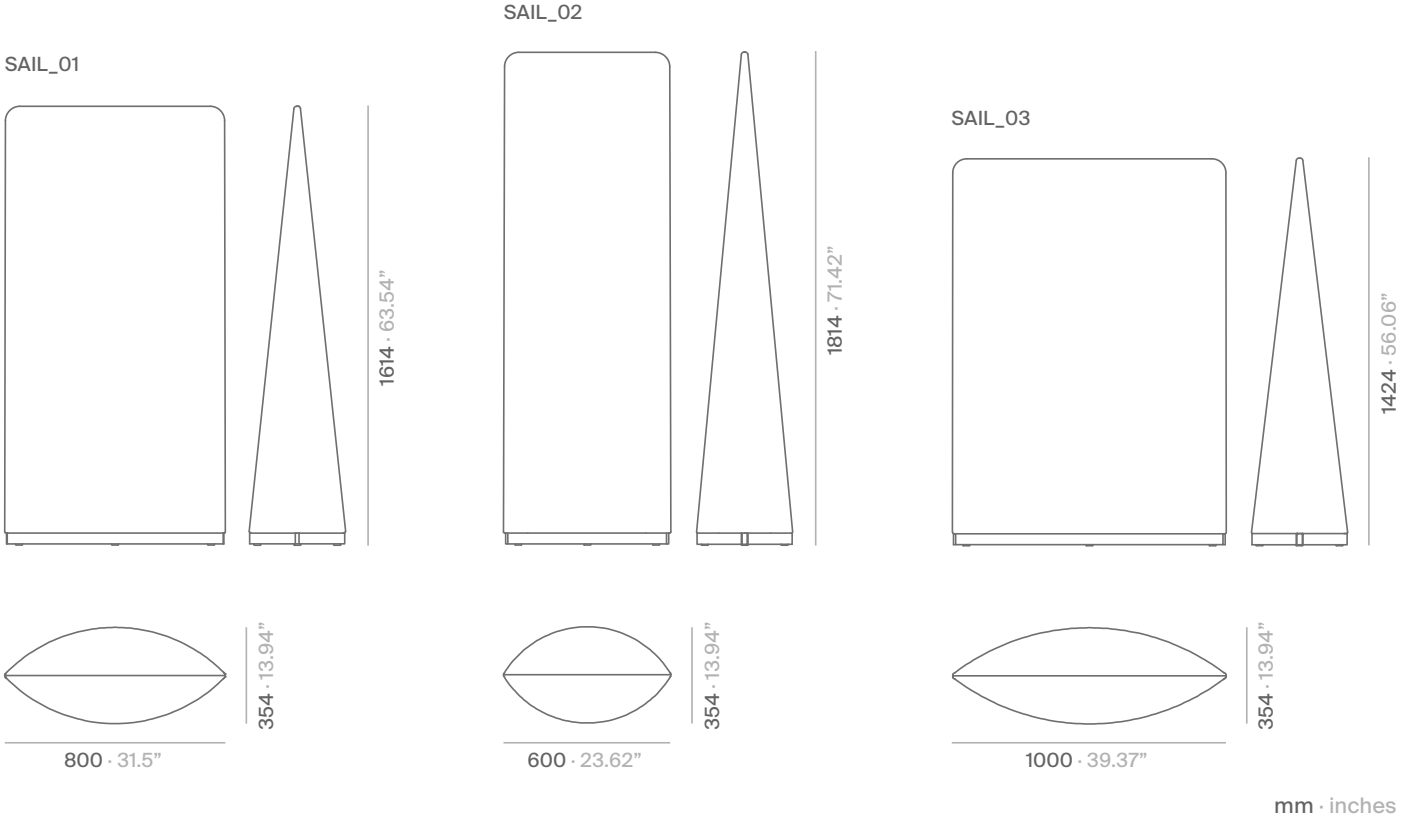
Acoustic fabric: 56% polyester and 44% post-consumer recycled polyester. It is 100% recyclable.

Dimensions:

SAIL_01: 800x354X1614 mm 31.5x13.94x63.54"

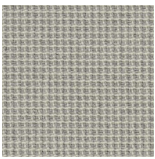
SAIL_02: 600x354X1814 mm 23.62x13.94x71.42"

SAIL_03: 1000x354X1424 mm 39.37x13.94x56.06"



Finishes:

BRUMA

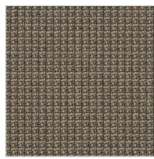


Bruma

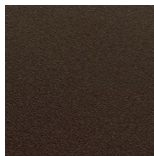


Textured pebble grey RAL 7032

POSIDONIA

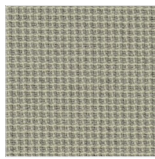


Posidonia



Textured bronze bagana

CALIZA

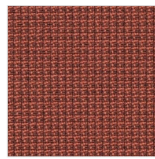


Caliza

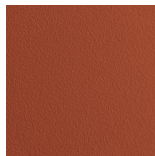


Textured olive RAL 6003

CORAL

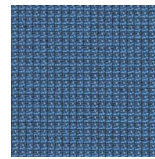


Coral

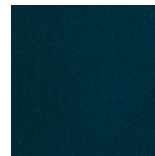


Textured copper brown RAL 8004

TRAMONTANA



Fabric



Base

Textured blue RAL 5011

Acoustic fabric and polyester paint.

Consult for special dimensions or any other modification.

Maintenance:

Polyester powder coating:

For dry dirt (dust), use a cloth dampened with water.

For greasy/oily dirt (fingerprints), use a sponge with water and liquid dish detergent (Vim liquid), then wipe with a cloth dampened with water. Avoid using detergents containing solvents or pure ethyl alcohol.

Fabric:

Wipe with a damp cloth.

Regular gentle vacuum cleaning helps to preserve the fabric's attractive colour and appearance.

Sustainability:

The materials used in manufacturing are 100% recyclable. The paints used contain no solvents, do not consume water, and do not generate emissions or discharges. The result is a reduced environmental impact.