

systemtronic  
datasheet PARALLEL



General description:

Parallel is a versatile product designed as a support for parasols. It is available in two versions: a support table and a support planter. Thanks to its wheels, it can be easily moved and adapted to various outdoor spaces. The table top, made of FENIX, stands out for its extremely matte finish, pleasant to the touch, and resistant to fingerprints.

Designer: Ximo Roca.

Year of launch: 2024.





Technical description:

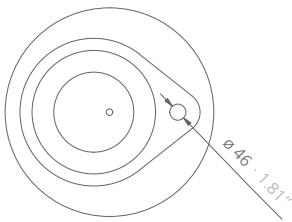
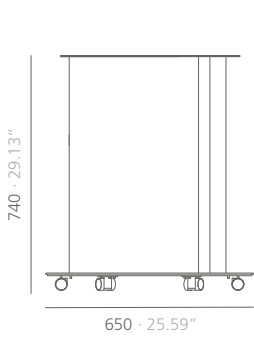
Materials:

Structure: aluminum  
 Base: steel  
 Tabletop: FENIX  
 Inner planter and water collection tray: polypropylene

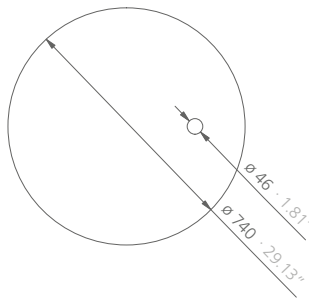
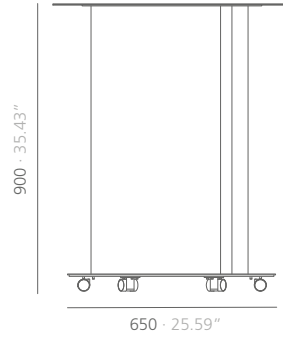
Dimensions:

PLANTER: 650x650x740 mm 25.59x25.59x29.13"  
 HIGH TABLE 740: 740x740x900 mm 29.13x29.13x35.43"  
 LOW TABLE 740: 740x740x740 mm 29.13x29.13x29.13"  
 LOW TABLE 1200: 1200x1200x740 mm 47.24x47.24x29.13"

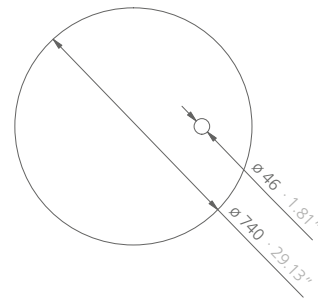
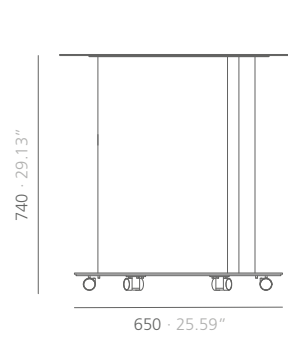
PLANTER



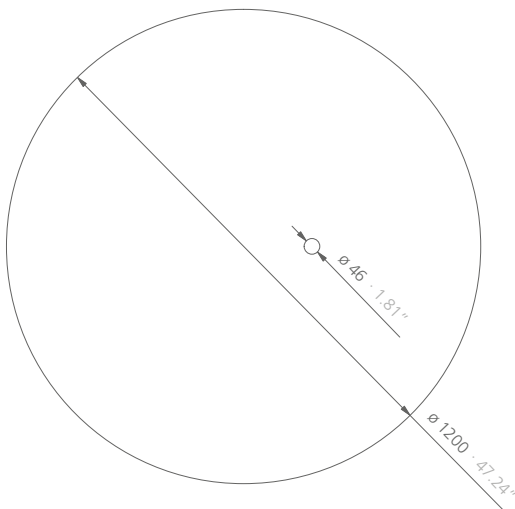
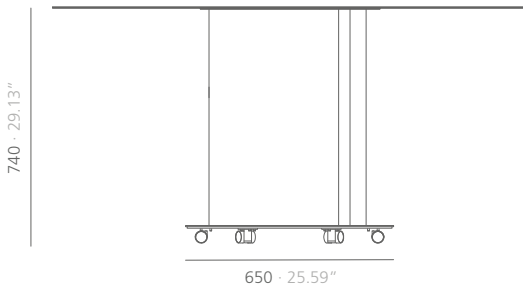
HIGH TABLE 740



LOW TABLE 740



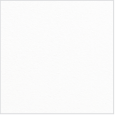

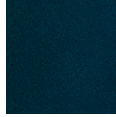








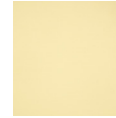
LOW TABLE 1200



The diameter of the parasol mast must not exceed 46 mm.

mm · inches

Finishes:

Structure:					
					
White RAL 9003	Black RAL 9004	Blue RAL 5011	Silk grey RAL 7044	Copper brown RAL 8004	Ivory RAL 1015
Tabletop:					
					
FENIX Bianco Kos	FENIX Nero Ingo	FENIX Blu Fes	FENIX Grigio Efeso	FENIX Rosso Namib	FENIX Beige Luxor
*Polyester paint					

Consult for special dimensions or any other modification.

Maintenance:-Polyester Paint:

For dry dirt (dust), use a damp cloth. For greasy/oily stains (fingerprints), wipe with a sponge with water and dishwashing liquid. Rinse with a damp cloth. Avoid using products containing solvents and/or pure ethyl alcohol.

Sustainability:

Manufacturing materials are 100 % recyclable. The used paints do not contain solvents, do not consume water and do not generate emissions or waste. The result is a lower environmental impact.