

systemtronic

datasheet ESCUDO



General description:

Escudo (translated into English as “Shield”) is born from a clear idea of protection on three levels. On one hand, it protects the fire extinguisher, integrating and housing it within the space. On the other, it preserves the harmony of the interior design, preventing the presence of safety equipment from visually interfering with the overall aesthetic. And, in its most essential meaning, it refers to fire protection—its ultimate function. The result is a refined object whose form evokes a rolled sheet of paper. Escudo is not just a fire extinguisher holder, but a piece that balances safety and design, featuring a steel structure that conveys both lightness and strength.

Escudo has been designed for wall installation; however, an optional base is available that can be attached to the product, allowing it to be used as a freestanding element.

Product Design Consultant: **Gensler**
Year of launch: 2026.



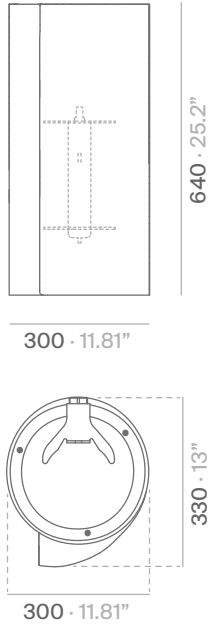
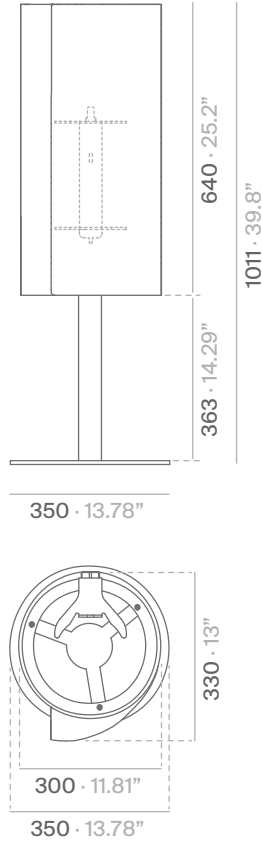
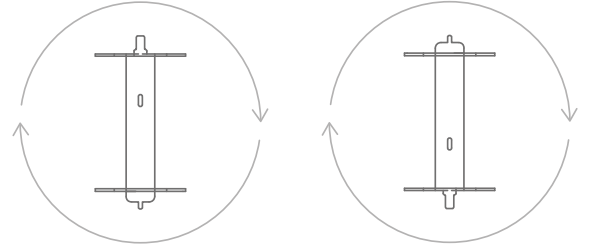
Technical description:

Material: Steel.

Dimensions:

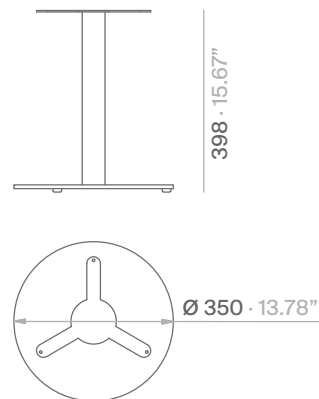
ESCUDO: 300x330x640 mm 11.81x13x25.2"

ESCUDO with base: 350x330x1011 mm 13.78x13x39.8"

ESCUDO**ESCUDO _ with base****INTERNAL HANGER**

Escudo incorporates an internal hanger designed to adapt to different types of fire extinguishers, ensuring a secure and stable hold. This element allows for two mounting positions, configurable depending on the type of extinguisher bracket.

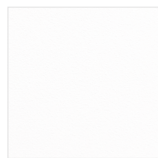
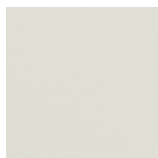
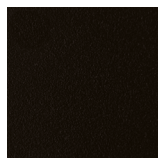
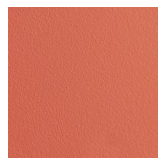
In the first position, the hanger is set for powder extinguishers, and in the second position, for CO₂ extinguishers.

BASE

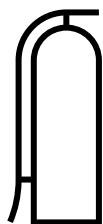
mm · inches

Finishes:

Structure and base

Textured white
RAL 9003Textured white grey
RAL 9002Textured black
RAL 9011Textured grey beige
RAL 1019Textured salmon
RAL 3022Textured petroleum
RAL 6004

Pictogram



Black



White



Escudo incorporates a high-adhesion vinyl pictogram, available in black or white depending on the selected structure finish.

Polyester paint.

Consult for special dimensions or any other modification.

Maintenance:

Polyester powder coating:

For dry dirt (dust), use a cloth dampened with water.

For greasy/oily dirt (fingerprints), use a sponge with water and liquid dish detergent (Vim liquid), then wipe with a cloth dampened with water.

Avoid using detergents containing solvents or pure ethyl alcohol.

Sustainability:

The materials used in manufacturing are 100% recyclable. The paints used contain no solvents, do not consume water, and do not generate emissions or discharges. The result is a reduced environmental impact.