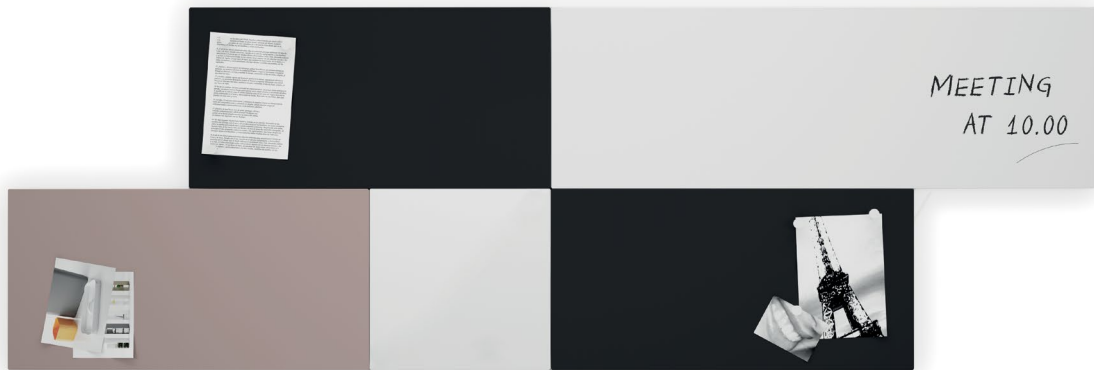


# systemtronic datasheet MODULOR

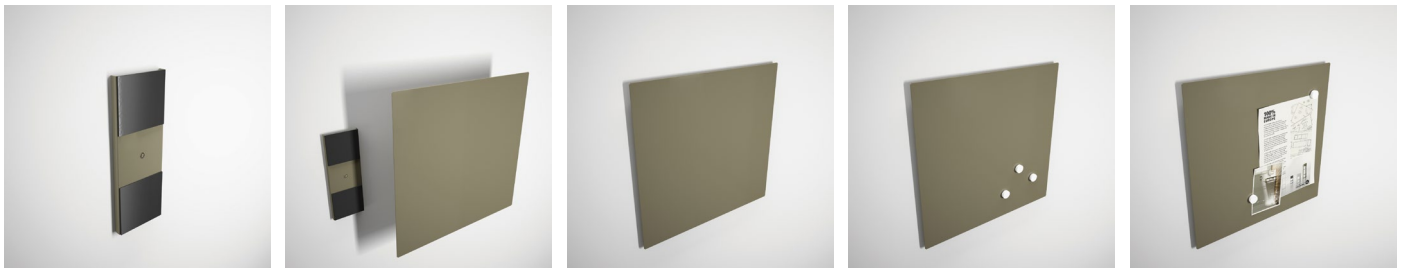


General description:

Metallic notice panels of different sizes and colours that allow adapting magnetic elements and create original wall compositions in many spaces: informative points, offices, receptions, children's rooms, etc.

Designer: Pablo Gironés.

Year of launch: 2016.

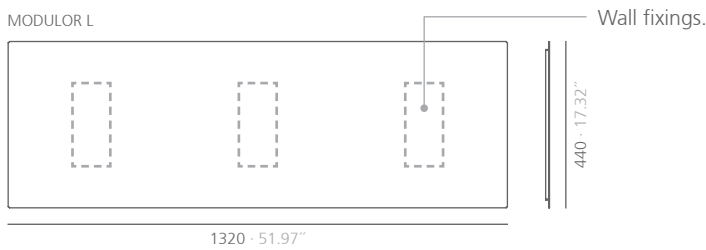
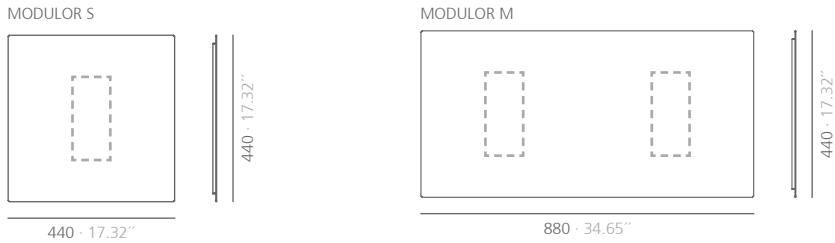


Technical description:

Material: Steel.

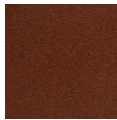
Dimensions:

- MODULOR\_S: 440x440 mm 17.32x17.32"
- MODULOR\_M: 880x440 mm 34.65x17.32"
- MODULOR\_L: 1320x440 mm 51.97x17.32"



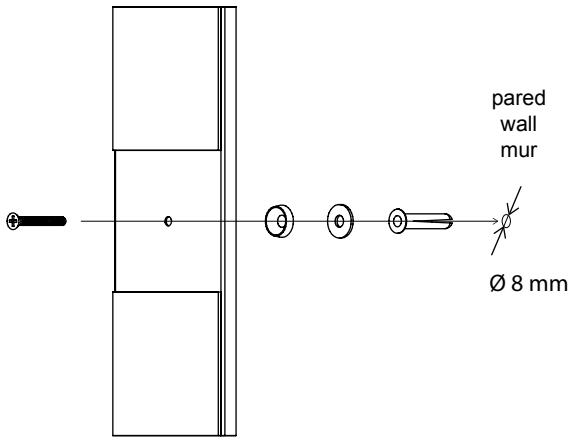
mm · inches

Finishes:

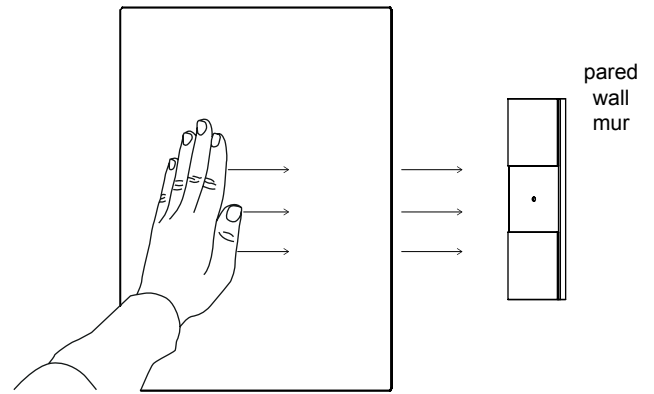
								
white gloss	white gloss to write-on <i>See you sponge</i>	satin black RAL 9011	matte grey beige RAL 1019	mustard gloss RAL 1012	textured red RAL 3001	textured blue RAL 5011	textured garnet RAL 3005	textured green RAL 6009
								
textured red sirung	textured bronze bagana	textured rust rame						

\*Polyester paint

Consult for special dimensions or any other modification.

Assembly:

## Magnetic fixing system.

Maintenance:-Polyester Paint:

For dry dirt (dust), use a damp cloth. For greasy/oily stains (fingerprints), wipe with a sponge with water and dishwashing liquid. Rinse with a damp cloth. Avoid using products containing solvents and/or pure ethyl alcohol.

-Aluminium-metal-glass-melamine-plastic:

We recommend using normal cleaning products for delicate surfaces. Alcohol, solvents and abrasive agents must be avoided.

Sustainability:

Manufacturing materials are 100 % recyclable. The used paints do not contain solvents, do not consume water and do not generate emissions or waste. The result is a lower environmental impact.