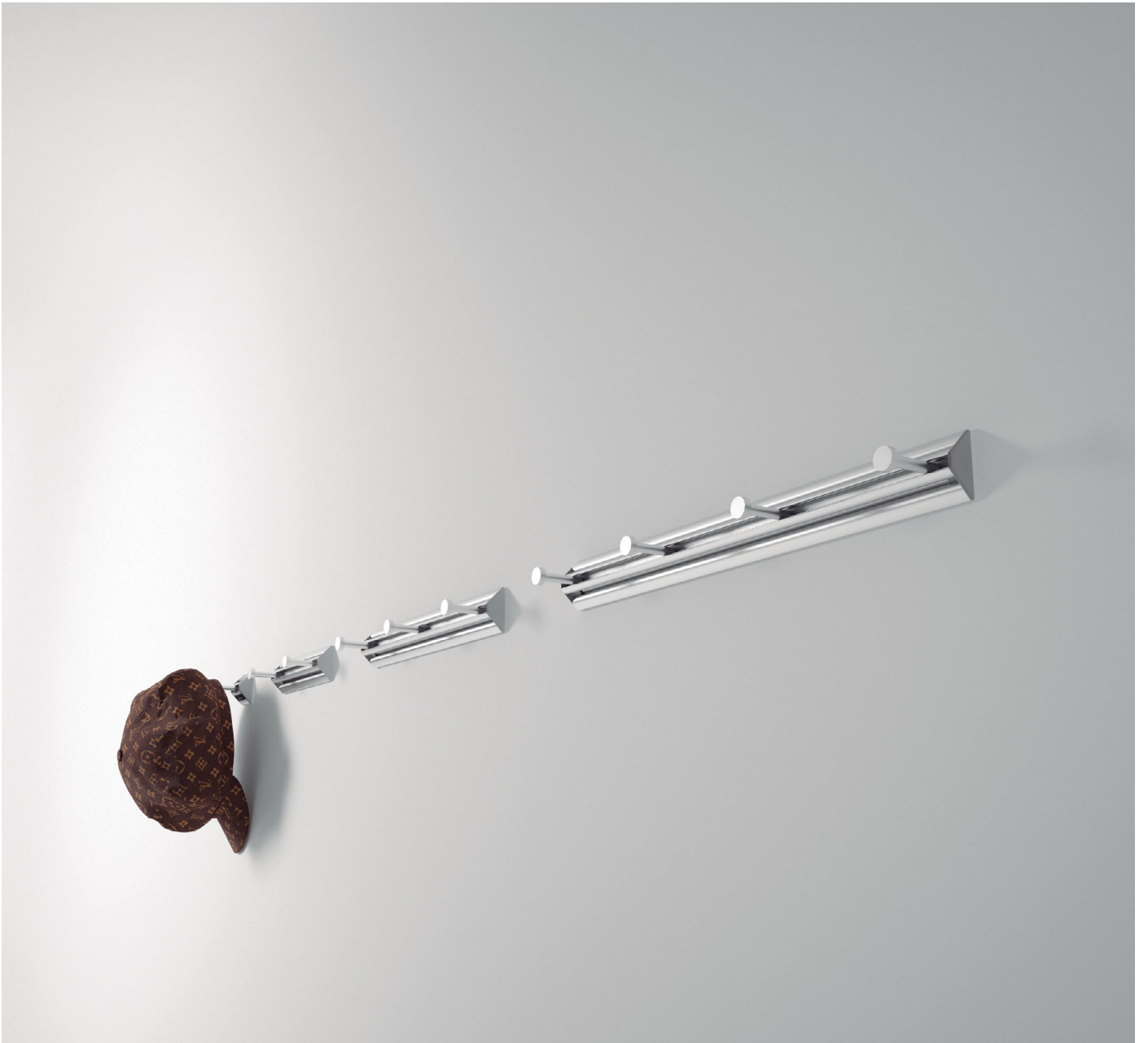


systemtronic
datasheet CLIMB



Technical description:

Wall rack made of aluminum available in six different lengths.
The fixing system of the hangers to the profile simplifies its mounting.

Diseñador: STC Studio.

Year of launch: 2007.



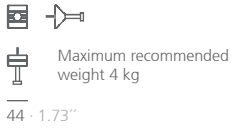
Technical description:

Materials: Aluminum profile with anodized silver matt finished.

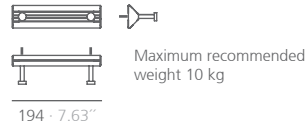
Dimensions:

- Climb_B1: 50x63x44 mm 1.97x2.48x1.73"
- Climb_B2: 50x63x194 mm 1.97x2.48x7.63"
- Climb_B3: 50x63x344 mm 1.97x2.48x13.54"
- Climb_B4: 50x63x494 mm 1.97x2.48x19.44"
- Climb_B7: 50x63x944 mm 1.97x2.48x37.16"
- Climb_B15: 50x63x2144 mm 1.97x2.48x84.41"

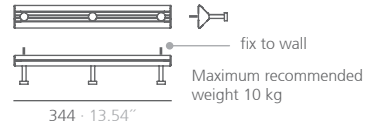
CLI1 1 hanger



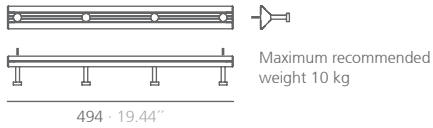
CLI2 2 hangers



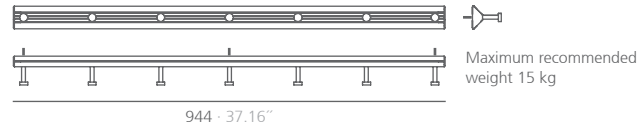
CLI3 3 hangers



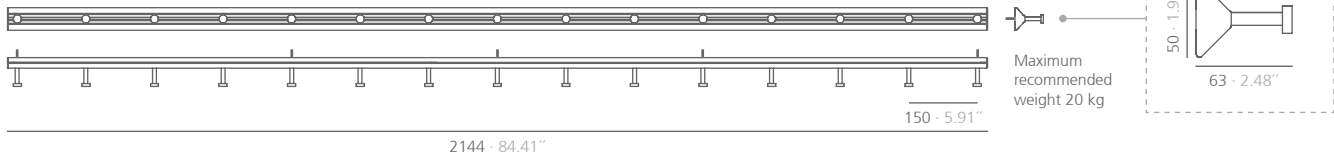
CLI4 4 hangers



CLI7 7 hangers



CLI15 15 hangers



mm · inches

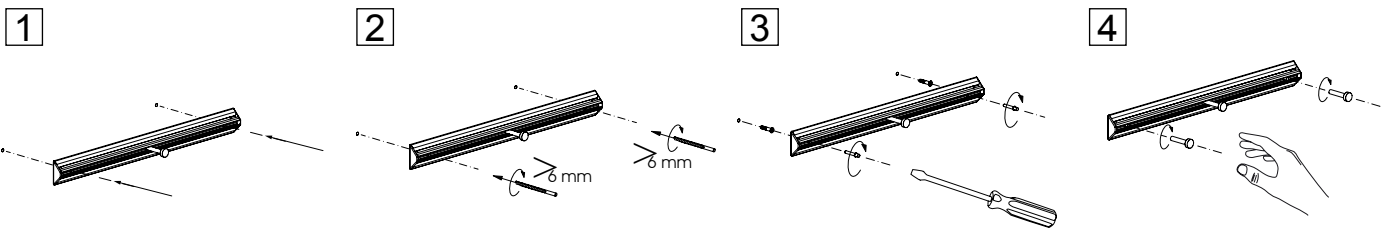
FINISHES:



To maintain its finish unalterable, avoid exposition to humid zones. Not suitable for bathrooms.

Consult for special dimensions or any other modification.

Assembly:

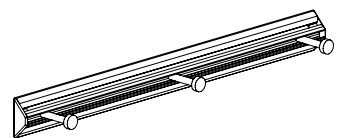


Maintenance:

-Aluminum-metal-glass-melamine-plastic:
We recommend using normal cleaning products for delicate surfaces. Alcohol, solvents and abrasive agents must be avoided.

Sustainability:

Manufacturing materials are 100% recyclable. The used paints do not contain solvents, do not consume water and do not generate emissions or waste. The result is a lower environmental impact.



systemtronic _Climb
www.st-systemtronic.com
nacional@st-systemtronic.com · export@st-systemtronic.com
tel. 96-1852784 · fax.34-961854482

ASSOCIATED N°00320 **BAIDIMME** INSTITUTO TECNOLÓGICO METALMECÁNICO, MUEBLE, MADERA, EMBALAJE Y AFINES

