

# systemtronic

datasheet CLIMB



Technical description:

Wall rack made of aluminum available in six different lengths.  
The fixing system of the hangers to the profile simplifies its mounting.

Diseñador: STC Studio.



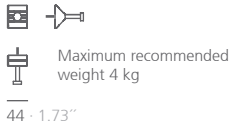
**Technical description:**

Materials: Aluminium profile with anodized silver matt finished.

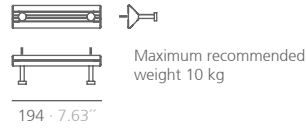
**Dimensions:**

- Climb\_B1: 50x63x44 mm 1.97x2.48x1.73"
- Climb\_B2: 50x63x194 mm 1.97x2.48x7.63"
- Climb\_B3: 50x63x344 mm 1.97x2.48x13.54"
- Climb\_B4: 50x63x494 mm 1.97x2.48x19.44"
- Climb\_B7: 50x63x944 mm 1.97x2.48x37.16"
- Climb\_B15: 50x63x2144 mm 1.97x2.48x84.41"

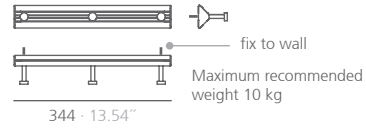
**CLI1 1 hanger**



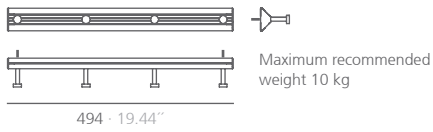
**CLI2 2 hangers**



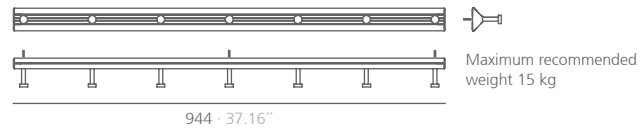
**CLI3 3 hangers**



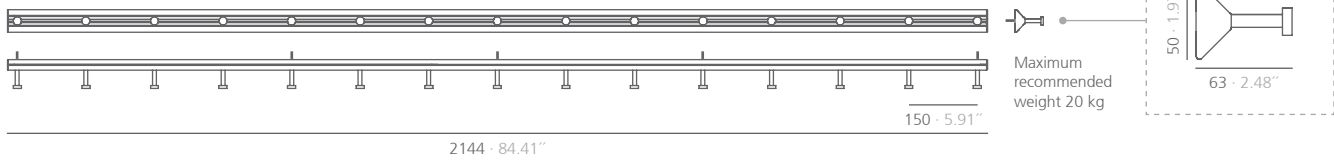
**CLI4 4 hangers**



**CLI7 7 hangers**



**CLI15 15 hangers**



SI units: mm and inches

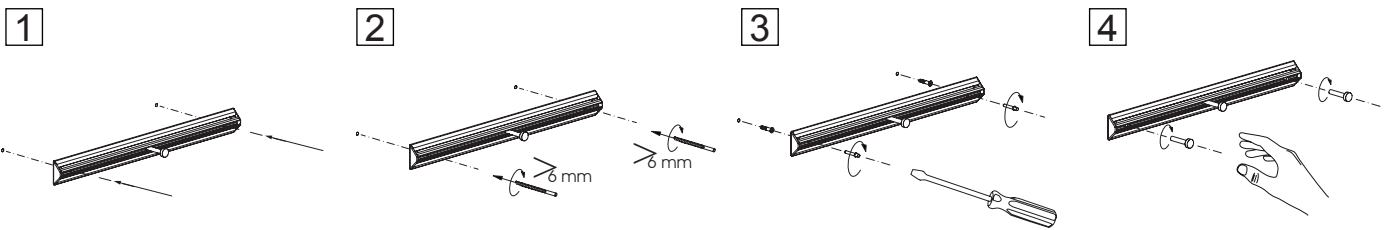
**FINISHES:**



To maintain its finish unalterable, avoid exposition to humid zones. Not suitable for bathrooms.

Consult for special dimensions or any other modification.

**Assembly:**



**Maintenance:**

-Aluminium-metal-glass-melamine-plastic:  
We recommend using normal cleaning products for delicate surfaces. Alcohol, solvents and abrasive agents must be avoided.

