

systemtronic

datasheet BRANCH



General description:

Coat stand with metallic hangers that evoke the branches of a tree. Available in several finishes.

Designer: STC Studio.

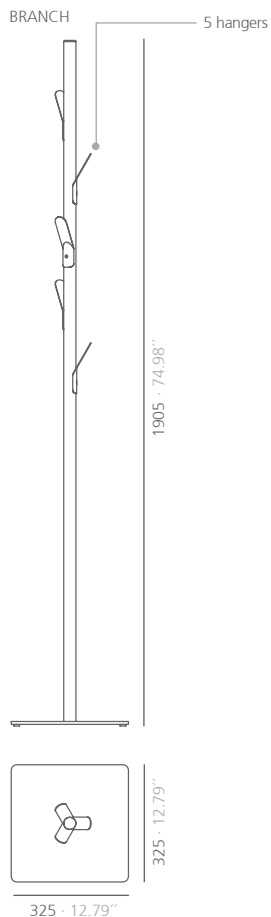


Technical description:

Materials:

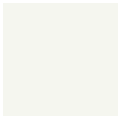

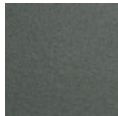

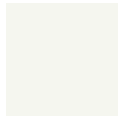
- Hangers: Steel.
- Base: Steel.
- Column: Estruded aluminum.

Dimensions: 325x325x1902 mm 12.79x12.79x74.88"



SI units: mm and inches

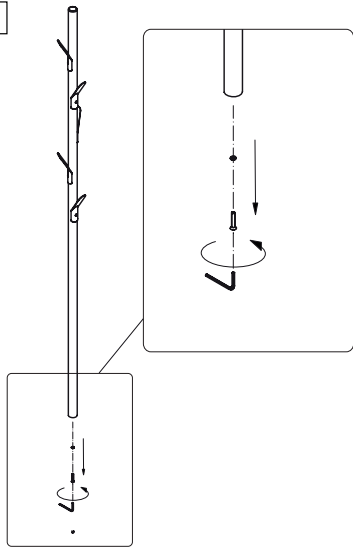
Finishes:

Base and hangers			Column	
				
white gloss	satin black RAL 2011	textured forge grey	anodized aluminum	white gloss
*Polyester paint				

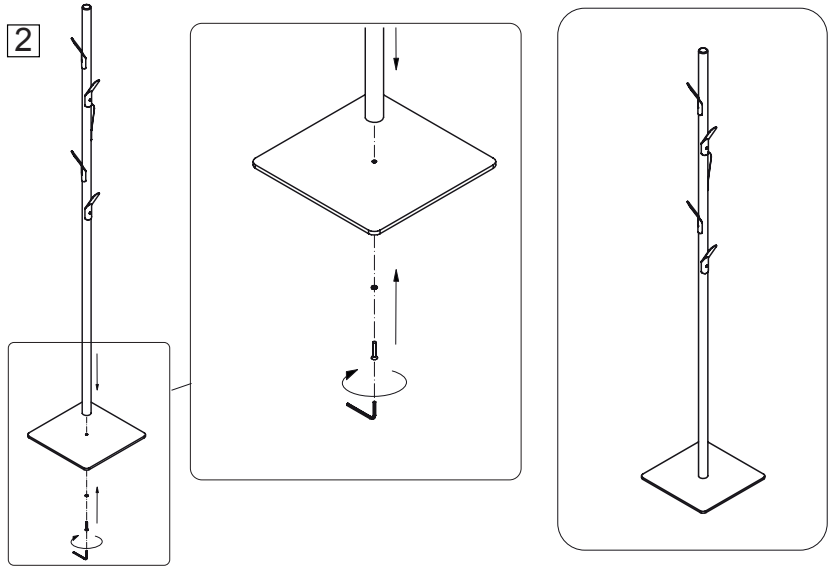
Consult for special dimensions or any other modification.

Assembly:

1



2



Maintenance:

-Polyester Paint:

For dry dirt (dust), use a damp cloth. For greasy/oily stains (fingerprints), wipe with a sponge with water and dishwashing liquid. Rinse with a damp cloth. Avoid using products containing solvents and/or pure ethyl alcohol.